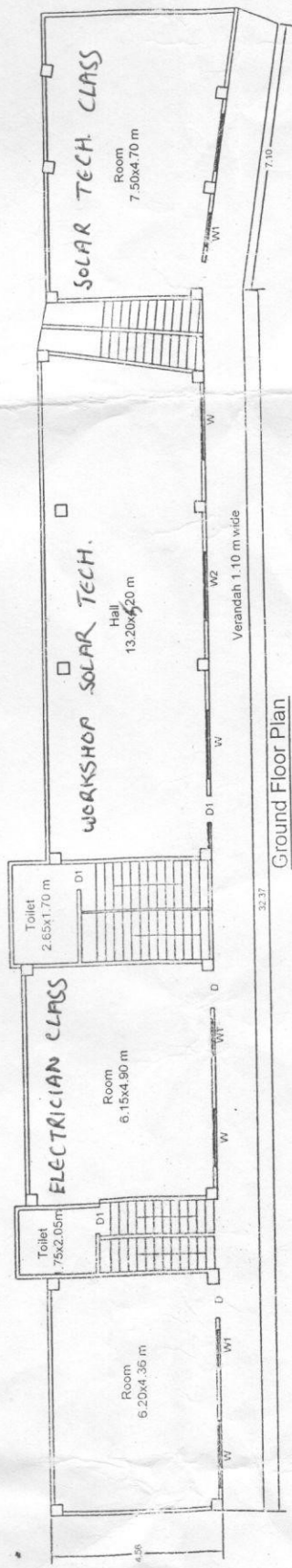


45

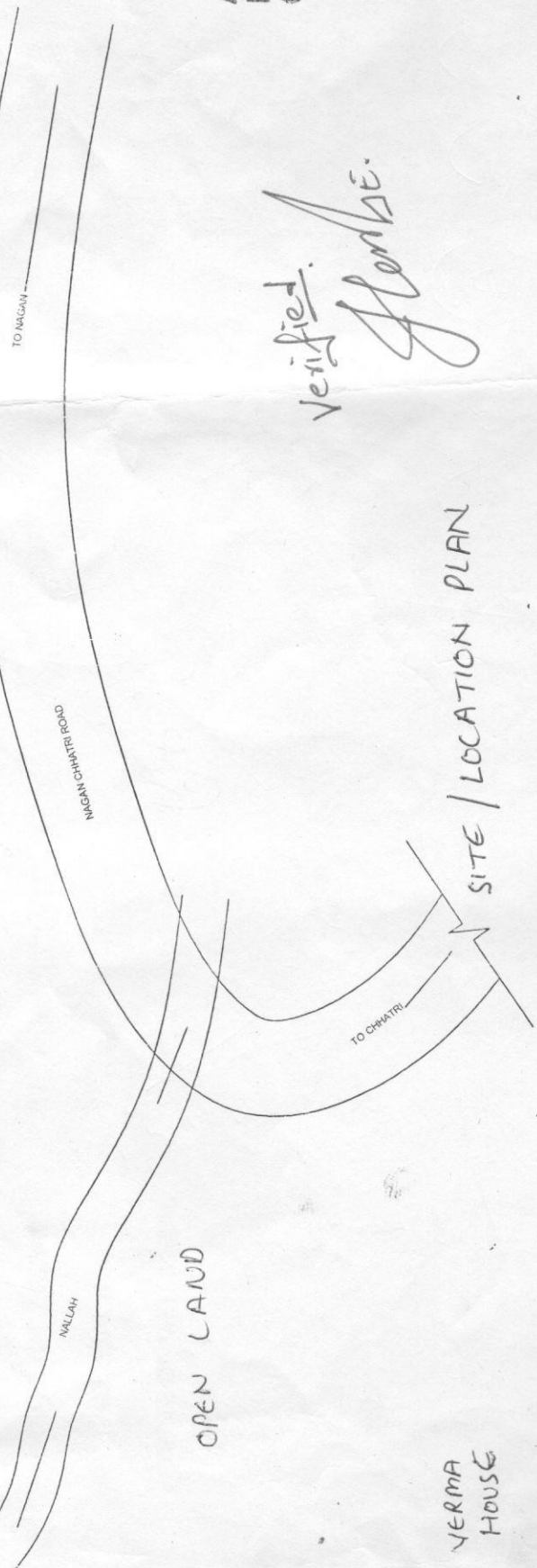
DETAIL OF FLOORWISE AREA	
1) GROUND FLOOR	
a) ROOM	6.20x4.36 27.03 Sqm.
b) TOILET	1.75x2.05 3.59 Sqm.
c) ROOM	6.15x4.90 30.14 Sqm.
d) HALL	13.20x4.20 55.40 Sqm.
e) ROOM	7.50x4.70 35.25 Sqm.
TOTAL	
155.92 Sqm. (A)	
2) FIRST FLOOR	
ROOM	7.10x6.70 47.57 Sqm.
HALL	7.00x7.70 53.90 Sqm.
HALL	3.80x5.80 22.04 Sqm.
TOILET	1.90x3.60 6.84 Sqm.
LOBBY	3.40x3.20 10.88 Sqm.
OFFICE	4.20x3.10 13.02 Sqm.
HALL	9.80x3.00 29.40 Sqm.
TOTAL	
155.45 Sqm. (B)	
TOTAL AREA (A+B)	
311.37 Sqm.	
AREA OF VERANDAH (43.79x41.70) = 1815.81	
GRAND TOTAL AREA = 2096.58 Sqm.	

OPEN LAND

OPEN LAND



PROPOSED PARKING



Assistant Engineer
H.P.W.D. Sub-Division
Chhatri

Verified.
Ghorbe.

VERMA HOUSE